



© Istockphoto / ismagilov

WELCOME

EU-OSHA's high level hybrid Workshop: "Smart digital systems for monitoring OSH".

Bilbao, 28 June 2023

**Malgorzata Milczarek,
Interim Head of Unit, Prevention and Research Unit (PRU), EU-OSHA**



WELCOME

EU-OSHA's high level hybrid Workshop: "Smart digital systems for monitoring OSH".

Bilbao, 28 June 2023

**Annick Starren,
Project lead, EU-OSHA**

EU-OSHA

(European Agency for Safety and Health at Work)

- A body of the EU
- Established in 1996 in Bilbao, Spain
- EU-OSHA is committed to making Europe a safer, healthier and more productive place to work, by promoting a culture of risk prevention to improve working conditions in Europe.
- Tripartite Board bringing together:
 - governments, employers' and workers' organisations
 - the European Commission



EU-OSHA

(European Agency for Safety and Health at Work)



- A body of the EU
- Established in 1996 in Bilbao, Spain
- EU-OSHA is committed to making Europe a safer, healthier and more productive place to work, by promoting a culture of risk prevention to improve working conditions in Europe.
- Tripartite Board bringing together:
 - governments, employers' and workers' organisations
 - the European Commission



Europe's Green and Digital Transition



DIGITALEUROPE EVENT

Uniting the twin transitions: There is no Green Deal without digital

The Just Transition Mechanism: making sure no one is left behind

PAGE CONTENTS

Introduction

Financing

Just Transition Fund

Just Transition Platform

Who will benefit?

Introduction

The Just Transition Mechanism (JTM) is a key tool to ensure that the transition towards a climate-neutral economy happens in a fair way, leaving no one behind. It provides targeted support to help mobilise around €55 billion over the period 2021-2027 in the most affected regions, to alleviate the socio-economic impact of the transition.



"We must show solidarity with the most affected regions in Europe, such as coal mining regions and others, to make sure the Green Deal gets everyone's full support and has a chance to become a reality."

Frans Timmermans, Executive Vice-President of the European Commission



(Binh Nguyen/Canary Media)



EU agencies

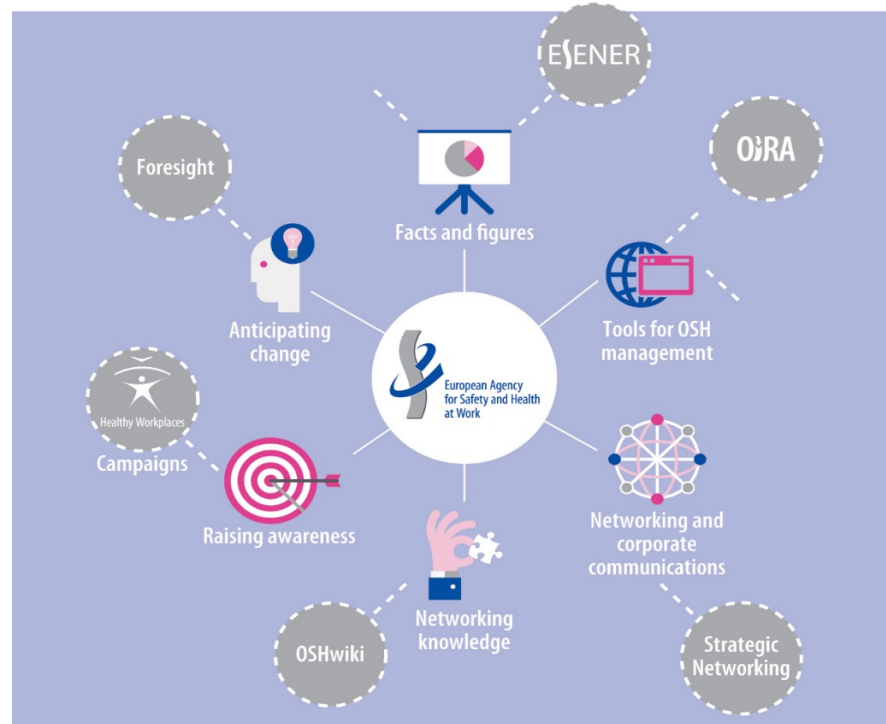


<https://youtu.be/r5uTJZ6JVoY>

European Agency for Safety and Health at Work (EU-OSHA)

- Who we are
- What we do/ don't do
- How we do it

EU-OSHA Priority areas and activities Multi-annual Strategic Programme 2014-2020



What we do and do not do

✓ Collect, analyse
and disseminate
information

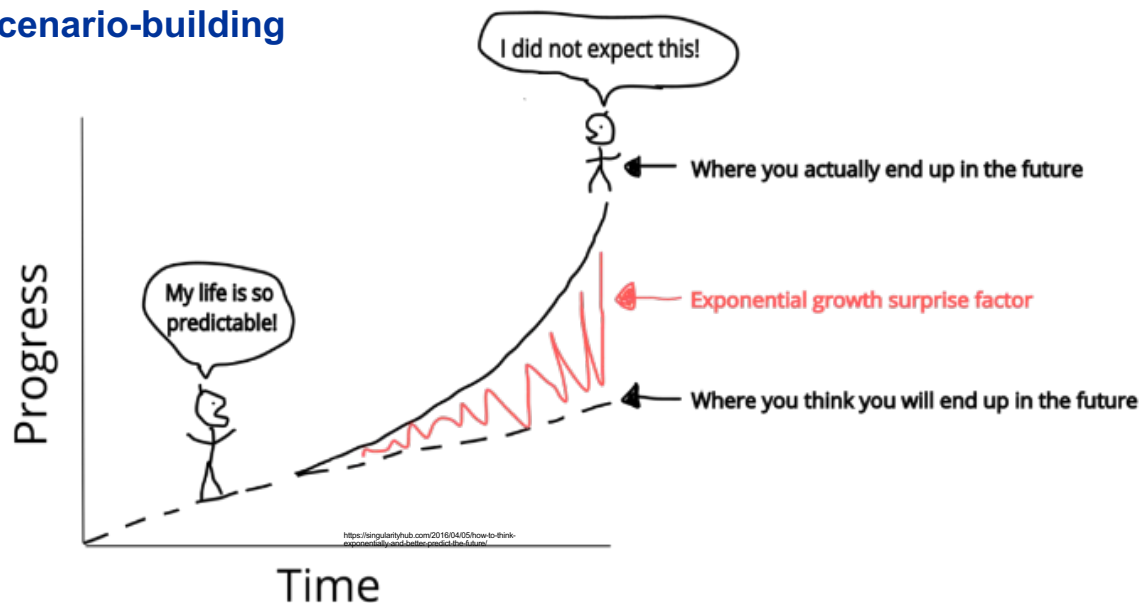


~~▪ Make legislation~~
~~▪ Inspect workplaces~~
~~▪ Enforce the law~~



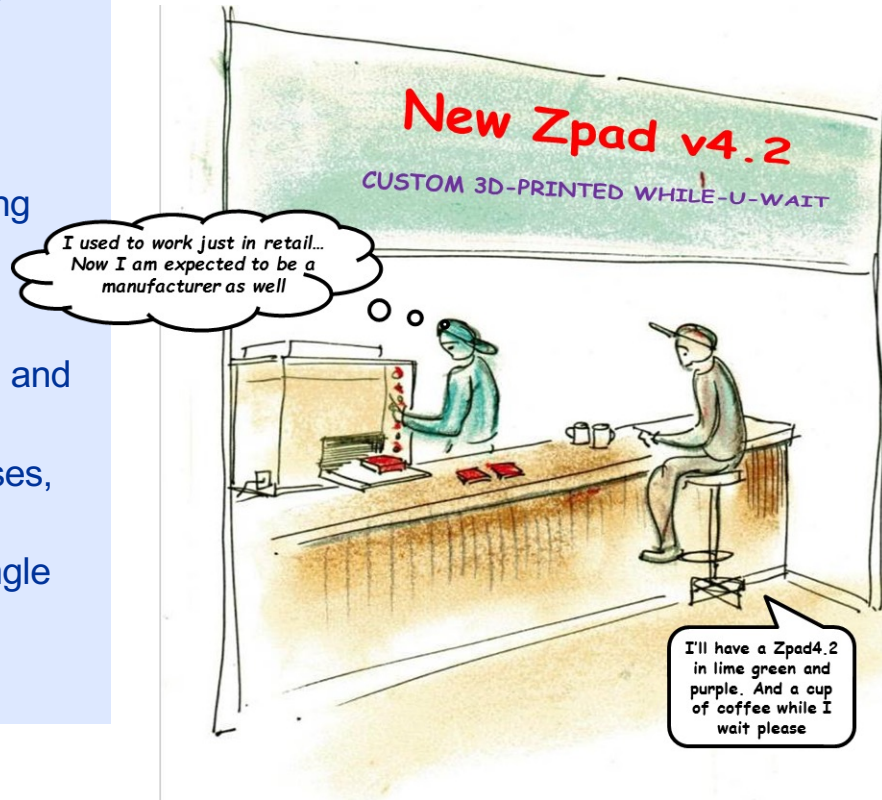
BACKGROUND DIGITALISATION EU-OSHA

- Foresight on new and emerging occupational safety and health risks associated with digitalisation by 2025
- Methodology: scenario-building



OSH and the digital transition: Key trends and drivers of change

- Workforce demographics
- ICT knowledge and skills
- Online environment and attitudes
- Virtual and flexible working
- Economic environment
- Data-enabled economy
- Alternative supply chains and distribution
- Micro and small enterprises, entrepreneurship
- The European Digital Single Market
- Collective action



Key drivers - Technological

- Robotics, automation and Artificial Intelligence
- Autonomous vehicles and drones
- Internet of Things and Big Data
- Virtual and Augmented Reality
- Interfaces (bionics, immersive communication, direct brain to computer, minaturisation and wearables etc.)
- Communications networks and mobile devices
- Cybersecurity

This clothes-folding robot is two months away from its planned launch.

CES 2017: Clothes-folding Laundroid robot readies for launch

8 January 2017 Last updated at 03:40 GMT

A clothes-folding robot that has been in development for more than a decade

NEWS

Home UK World Business Politics Tech Science Health



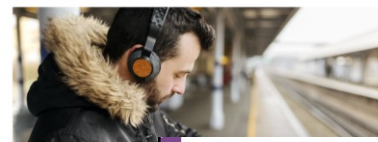
CES 2017: Ford sticks to self-driving cars by 2021 pledge

7 January 2017 Last updated at 00:21 GMT

Ford insists it will have fully autonomous cars, without steering wheels or brake pedals, on the roads by 2021.

DAILY NEWS 12 January 2017

Smartwatches know you're getting a cold days before you feel ill



Home News / Health / Technology

NEWS 15:30 PREVIEW 14 December 2016

We will soon be able to read minds and share our thoughts



Advertisement
Set up your auto enrolment pension scheme with NEST. It feels good.
[Find out more](#)

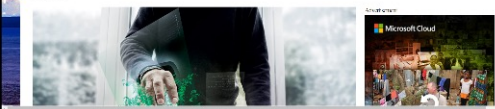
HOME NEWS TECHNOLOGY SPACE BUSINESS HEALTH LEADERSHIP LIFESTYLE TOPICS EVENTS ABOUT

Smart buildings predict when critical systems are about to fail

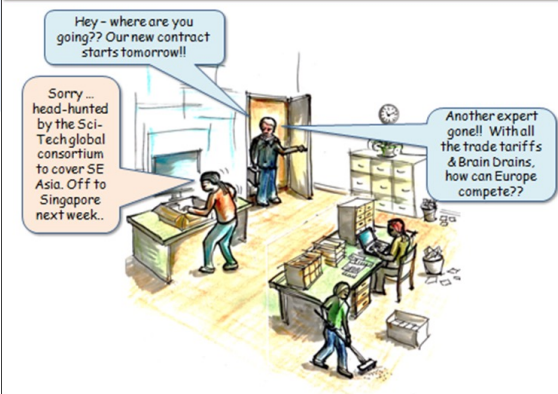


NEWS 15:30 PREVIEW 14 December 2016

Augmented reality set to overtake VR as new apps go live



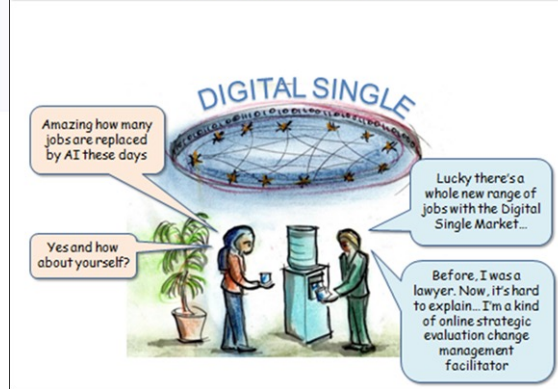
BRAIN DRAIN



Governance & public attitudes

High/Supportive

DIGITAL SINGLE MARKET



Economic growth & technology innovation

Low

Scenario 1
Evolution

Scenario 2
Transformation

Scenario 4
Fragmentation

Scenario 3
Exploitation

High

OUT OF SIGHT



Low/ Resistive

PRODUCTIVITY PROBLEMS



EU-OSHA's Foresight insights: OSH aspects common to all scenarios

- Changing work patterns,
- Loss of and changes to jobs
- Increasing numbers of self-employed and online platform workers
- Change to employer/employee relationship
- Increasing use of wearable ICT and smart PPE
- Ergonomic risks by online work
- Automation, robotics, AI and new HMIs will remove people from dangerous environments
- Work related stress

The difference is the **pace of change, how widespread or fragmented this is across sectors and how well these changes are managed.**

EU-OSHA's Foresight: OSH aspects common to all scenarios

- Changing work patterns,
- Loss of and changes to jobs
- Increasing numbers of self-employed and online platform workers
- Change to employer/employee relationship
- **Increasing use of wearable ICT and smart PPE**
- Ergonomic risks by online work
- Automation, robotics, AI and new HMIs will remove people from dangerous environments
- Work related stress

The difference is the **pace of change**, how widespread or fragmented this is across sectors and how well these changes are managed.

From foresight findings to research priority setting



Project 1: AI-based systems (inc robotics)for the automation of tasks

- *Automation of physical and cognitive tasks, changed job contents and designs, and impact on OSH*

Project 2: New forms of worker management through AI-based systems

- *Algorithmic management, people analytics, gamification*

Project 3: OSH and digital platform work

- *In-depth description of policies/initiatives*
- *Good examples*

Project 4: Digital systems for the monitoring and improvement of OSH

- *Wearables - smart glasses, watches, smart PPEs, drones*

Project 5: Telework and remote work and OSH

From foresight findings to research priority setting



Project 1: AI-based systems (inc robotics) for the automation of tasks

- Automation of physical and cognitive tasks, changed job contents and designs, and impact on OSH

Project 2: New forms of worker management through AI-based systems

- Algorithmic management, people analytics, gamification

Project 3: OSH and digital platform work

- In-depth description of policies/initiatives
- Case examples

Project 4: Digital systems for the monitoring and improvement of OSH

- Wearables - smart glasses, watches, smart PPEs, drones

Project 5: Telework and remote work and OSH

The research results will be Input for the Healthy Workplaces Campaign on Digitalisation and OSH starting in 2023



From foresigh findings to research priority setting and awareness raising campaign



Healthy Workplaces Campaign 2023-25 SAFE AND HEALTHY WORK IN THE DIGITAL AGE

Welcome to the European Agency for Safety and Health at Work.

Guidelines in the event of an EMERGENCY

**For your own safety, and in the event of any
emergency, please note the following guidelines.....**

- Keep calm, do not run.
- Do not return for belongings.
- Do not use the lift.
- Pay attention to the safety signs and maps displayed.



Do not take unnecessary risks



In an emergency...



LEAVE THE BUILDING
when you hear the alarm



FOLLOW INSTRUCTIONS
given by the Agency's safety co-ordinators



USE THE EMERGENCY EXIT ROUTE



GO TO THE MEETING POINT
situated behind Miribilla Train Station and report to a safety co-ordinator

